

Name: \_\_\_\_\_  
 Period: \_\_\_\_\_

**Warm-up: before Graphing on a calculator**

**SHOW YOUR WORK** as demonstrated in class notes

**1. Simplify:**

a.  $15y - 10 + 2y + 3 - 9y$

b.  $10m + 3 - 8(2m - 5)$

c.  $(x + 4)(x - 3)$

**2. Evaluate each function:** Given  $g(x) = 3x^2 - 5$

a. Find  $g(4) =$

b. Find  $g(0) =$

c. Find  $g(-2) =$

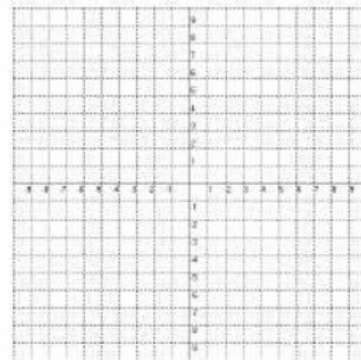
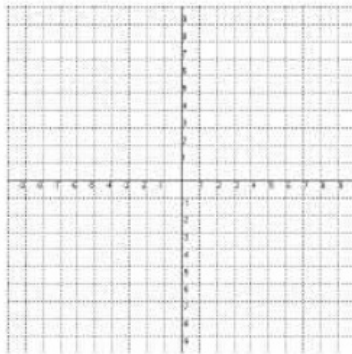
**3. Complete the table and graph each function:**

a. Quadratic Function:  $h(x) = (x+1)^2$

b. Absolute Value Function:  $g(x) = \frac{2}{3}|x|$

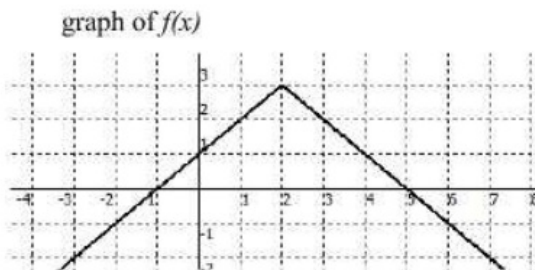
<b>x</b>	-3	-2	-1	0	1	2	3
<b>h(x)</b>							

<b>x</b>	-9	-6	-3	0	3	6	9
<b>g(x)</b>							



**4. Use the graph of f(x) to complete the table of values**

<b>x</b>	<b>f(x)</b>
<b>6</b>	
<b>4</b>	
	<b>3</b>
<b>0</b>	
<b>-3</b>	
<b>-4</b>	



Name: \_\_\_\_\_  
 Period: \_\_\_\_\_

**Warm-up: before Graphing on a calculator**

**SHOW YOUR WORK** as demonstrated in class notes

1. Simplify:

a.  $15y - 10 + 2y + 3 - 9y$   
 $8y - 7$

b.  $10m + 3 - 8(2m - 5)$   
 $10m + 3 - 16m + 40$   
 $-6m + 43$

c.  $(x + 4)(x - 3)$   
 $x^2 - 3x + 4x - 12$   
 $x^2 + x - 12$

2. Evaluate each function: Given  $g(x) = 3x^2 - 5$

a. Find  $g(4) = 3(4)^2 - 5$   
 $= 3 \cdot 16 - 5$   
 $= 48 - 5$   
 $= 43$

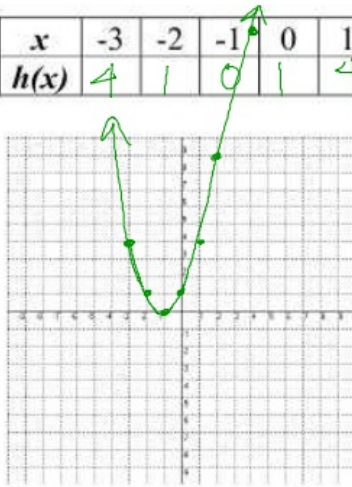
b. Find  $g(0) = 3(0)^2 - 5$   
 $= -5$

c. Find  $g(-2) = 3(-2)^2 - 5$   
 $= 3 \cdot 4 - 5$   
 $= 12 - 5$   
 $= 7$

3. Complete the table and graph each function:

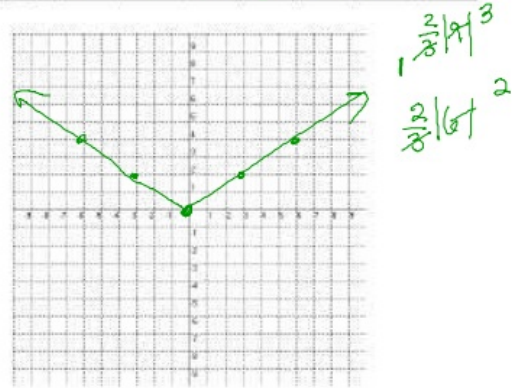
a. Quadratic Function:  $h(x) = (x+1)^2$

x	-3	-2	-1	0	1	2	3
h(x)	4	1	0	1	4	9	16



b. Absolute Value Function:  $g(x) = \frac{2}{3}|x|$

x	-9	-6	-3	0	3	6	9
g(x)	6	4	2	0	2	4	6



4. Use the graph of  $f(x)$  to complete the table of values

x	f(x)
6	-1
4	1
2	3
0	1
-3	-2
-4	-3

